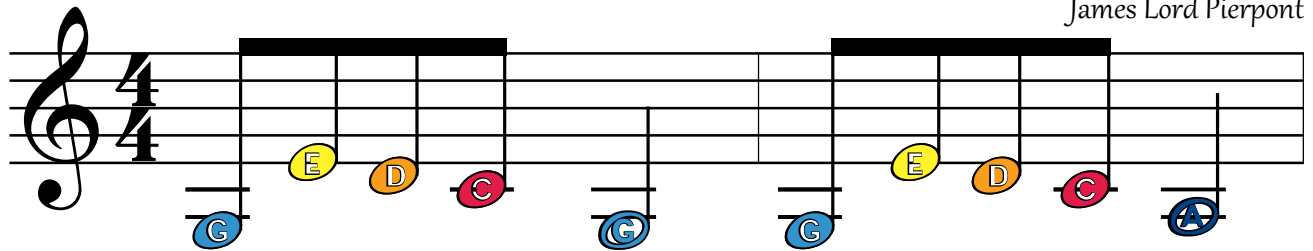


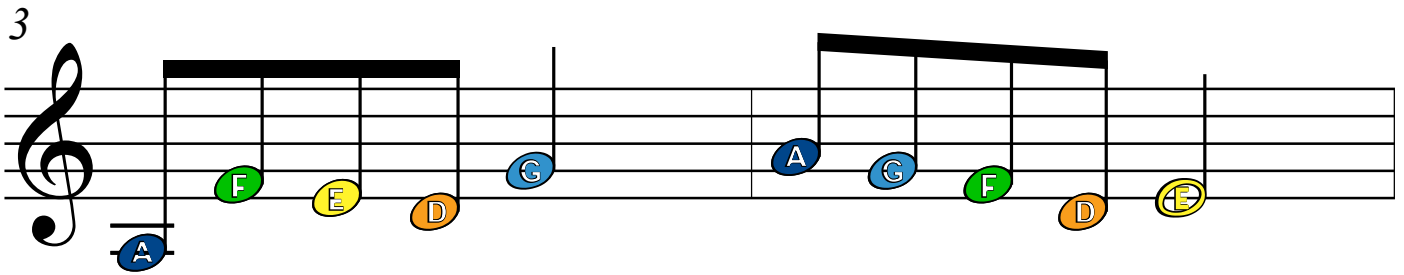
Jingle Bells

Glockenspiel

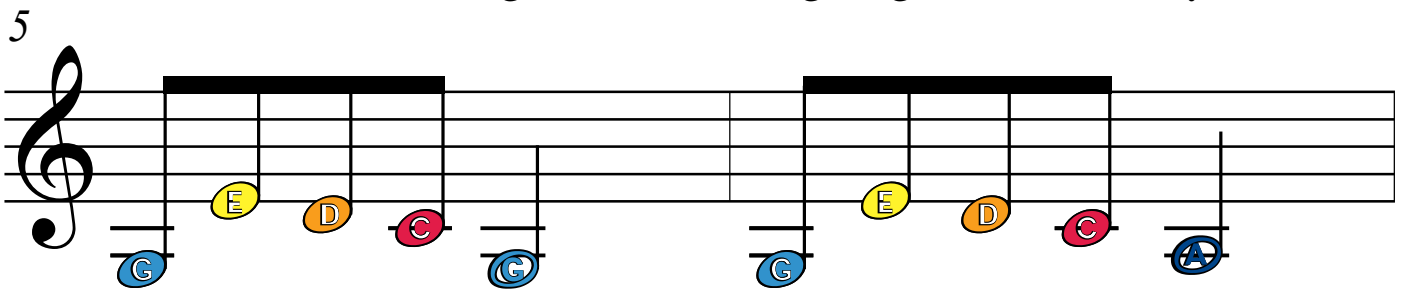
James Lord Pierpont



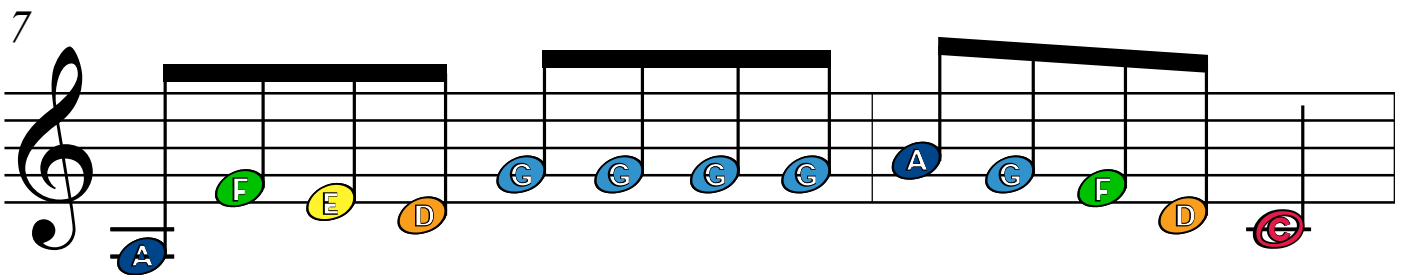
Dash-ing through snow In a one horse o - pen sleigh



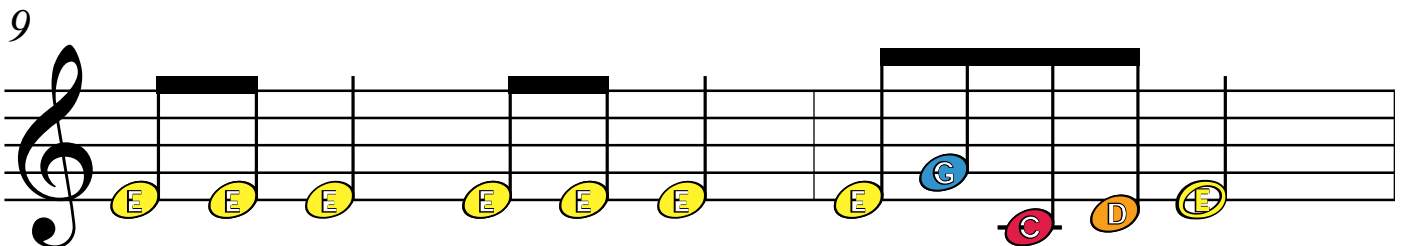
O'er the fields we go Laugh-ing all the way



Bells on both tails ring Ma - king spi - rits bright



What fun is to laugh and sing a sleigh-ing song to - night



Jin - gle bells, jin - gle bells, jin - gle all the way

11

A musical staff in treble clef showing measure 11. The notes are: F (green), F (green), F (green), F (green), F (green), E (yellow), E (yellow), E (yellow), E (yellow), D (orange), D (orange), E (yellow), D (orange), and a final G (blue) on a separate stem.

Oh, what fun it is to ride in a one horse o - pen sleigh__

13

A musical staff in treble clef showing measure 13. The notes are: E (yellow), E (yellow), E (yellow), E (yellow), E (yellow), E (yellow), E (yellow), G (blue), C (red), D (orange), and E (yellow).

Jin - gle bells, jin - gle bells, jin - gle all the way

15

A musical staff in treble clef showing measure 15. The notes are: F (green), F (green), F (green), F (green), F (green), E (yellow), E (yellow), E (yellow), G (blue), G (blue), F (green), D (orange), and E (yellow).

Oh, what fun it is to ride in a one horse o - pen sleigh!

A key chart showing the notes G through A with colored bars: G (blue), A (dark blue), B (white), C (red), D (orange), E (yellow), F (green), G (light blue), and A (dark blue). To the right, notes B through G are shown in white boxes.

A musical staff in treble clef with notes corresponding to the key chart above: G, A, B, C, D, E, F, G, A, B, C, D, E, F, G.